

Rotherham Heritage Learning Service

GUIDE FOR TEACHERS

**Inspirational workshops
that bring learning
to life**

www.cliftonpark.org.uk
rotherhamheritagelearning.org.uk

Rotherham
Metropolitan
Borough Council



Welcome to Rotherham Heritage Learning Service

At Rotherham Heritage Learning Service we are passionate about heritage, arts and culture.

Inspired by our collections and heritage buildings, our education team brings the past to life with an exciting programme of inspiring and interactive activities.

Discover why Romans settled in Rotherham.

Take part in cooking using our Victorian kitchen range.

Learn about Boston Castle and why it was built.

Explore how the Stone Age people lived in prehistoric Rotherham.

Our school activities are linked to the National Curriculum from Early Years Foundation Stage to Key Stage 2 with a focus on the local history of the Rotherham area.

Our sessions are delivered within our heritage venues of Clifton Park Museum and Boston Castle. Both sites are located within local parks. We also offer an outreach service and can deliver some of our schools activities in your school.



Speak to a member of our education team for help to plan your visit on **01709 336633** or email **heritage.learn@rotherham.gov.uk**

Our Heritage Sites

Clifton Park Museum

Built in 1783, Clifton House was once home to the Walker family until it became a museum in 1893. Explore the galleries to discover the local history through themed exhibitions. There are exhibitions on pre-history to within living memory, with a focus on Romans, Victorians and the Walker family.



Boston Castle

Boston Castle was built as a hunting lodge in 1775 for local landowner the Earl of Effingham. Admire the amazing views of Rotherham and the surrounding area from the Castle roof.

Assisted school sessions have exclusive use of the building.

Clifton Park and Boston Park

Clifton Park Museum and Boston Castle are both set within heritage parks. Make a full day of your visit and enjoy these wonderful outdoor spaces.

Please enquire for details on what is available.



York and Lancaster Regimental Museum & Rotherham Archives and Local Studies Service

Within Clifton Park Museum is the York and Lancaster Regimental Museum. Explore the history of the Regiment from the Victorians, to the First and Second World Wars through to the present day.

Our Archives and Local Studies Service can offer research and workshops to link in with your local history topics.

Sessions

Looking at Toys – EYFS & KS1

In this activity, children will learn about toys from Clifton Park Museum's collections. They will have the opportunity to identify, play and talk about toys from the past and compare them with their own toys.



They will also investigate

what materials toys were made from in the past, and learn about the chronology of the toys. Children will also learn how each of the toys work.

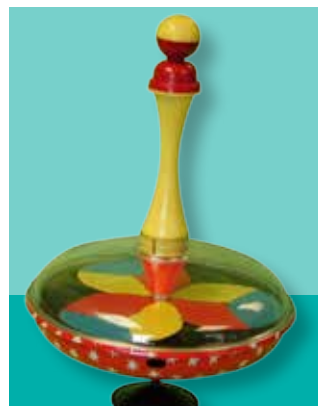
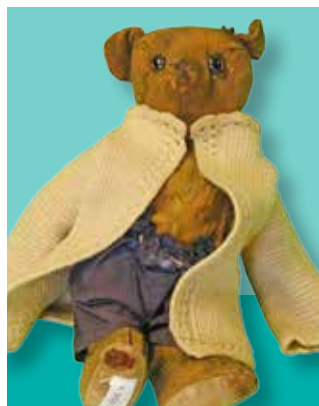
Festive Toys – EYFS & KS1

During December bring your class to celebrate the magic of Christmas. Our Christmas helper will demonstrate toys from the past and how they work. The class will be able to make a Christmas toy and write a letter to Santa.

Cross curricular links: History – Changes within living memory;
Science – every day materials

Venue: Clifton Park Museum, Boston Castle or in your school

Time: Half day



The Romans in Rotherham

– KS1 & KS2

Pupils will explore and learn about the impact of the Romans and discover what life was like for a Roman soldier at Rotherham's Templeborough Fort.



This session includes two workshops:

- Participate in role-play and object handling, focusing on the lives of Roman soldiers at Templeborough Roman Fort.
- Learn about the work of an archaeologist, investigating Roman artefacts found at Templeborough Fort (now the site of Magna).

You can choose a full day or a half day visit. Full days will include both workshops and half-day includes one of the workshops. Both options include self-guided Roman gallery activities and trail.

Cross curricular links: History, English, Maths and Science

Venue: Clifton Park Museum, Boston Castle or in your school

Times: Full or Half day



The Stone Age – KS2

A visit to Clifton Park and Museum will bring the Stone Age to life. Meet the Stone Age person and discover what life was like in prehistoric times during the three periods in the Stone Age; Palaeolithic, Mesolithic and Neolithic to discover the changes over these periods.

Pupils will learn through drama, practical skills and activities based both in the park and museum.

Activities include: Firing arrows, making a spark using a flint and steel, exploring the pre-history galleries and investigating Real Stone Age tools.

Cross curricular links: History, science, Geography, English and Maths

Venue: Clifton Park and Museum

Time: Full or Half day



Egyptians – KS2

Pupils will have the chance to discover real Egyptian artefacts from the museum collection. Using the objects as inspiration the class will make their own Egyptian mask and clay Scarab beetle. They will also write their own gallery labels for the artefacts on display and have a go at Egyptian maths.



Cross curricular links: History, Art, Geography, English and Maths

Venue: Clifton Park Museum or in your school

Time: Half day

Discover Clifton Park from past to present – KS2

Discover the history of Clifton Park and people who lived and worked there. In this session pupils discover more about the park by investigating archive material including photographs, documents and censuses.



The session includes a tour of the park using historical photographs to look at the changes to Clifton Park.

Cross curricular links: History, Geography and English

Venue: Clifton Park and Museum

Time: Half day

Discover Clifton House in Victorian Times

– KS1 & KS2

Children will be transported back in time to explore and experience how Clifton House was once a thriving family home and workplace. During their visit they will meet the Victorian characters of the house including the Cook, Butler or Housekeeper.



They will discover more about the Walker family who lived in Clifton House and the servants who also lived there. Children will learn and explore the roles of servants including cooking on the Victorian Range, role play and handling Victorian objects.

Cross curricular links: History, Design and Technology (nutrition), English and Maths

Venue: Clifton Park Museum

Time: Half day



Mini Museum – KS1 & KS2

Are you creating a museum in your classroom? Would you like to find out more about how museums work and how artefacts are looked after and displayed? Children will have the opportunity to meet museum staff and ask questions about working in a museum.

Activities will also include making a mini museum in a box, using real museum artefacts and writing information labels, as well as a handling workshop looking at artefacts from museum collections which can link to your classroom topic.

Cross curricular links: History, English and Art

Venue: Clifton Park Museum or in your school

Time: Half day

Remembering Local Soldiers of the Great War – KS2

Focusing on WWI soldiers commemorated on the Cenotaph in Clifton Park; children will investigate the lives of the local soldiers using photographs and newspapers from our archive collection.

We will take a look at the how we remember the fallen and will finish the workshop by making a poppy for a soldier and a visit to the Cenotaph in Clifton Park.

Cross curricular links: History and English

Venue: Clifton Park and Museum

Time: Half day



All school sessions available

Session	Key Stage	Venue
Mini Museum	Key Stage 1 & 2	<ul style="list-style-type: none">• Clifton Park Museum• In your school
Looking at Toys	EYFS and Key Stage 1	<ul style="list-style-type: none">• Clifton Park Museum• Boston Castle• In your school
The Stone Age	Key Stage 2	<ul style="list-style-type: none">• Clifton Park and Museum
The Ancient Egyptians	Key Stage 1 & 2	<ul style="list-style-type: none">• In your school
The Romans in Rotherham	Key Stage 1 & 2	<ul style="list-style-type: none">• Clifton Park Museum• Boston Castle• In your school
Discovering Clifton House in Victorian Times	Key Stage 2	<ul style="list-style-type: none">• Clifton Park Museum
Remembering Local Soldiers	Key Stage 2	<ul style="list-style-type: none">• Clifton Park and Museum
The Second World War at Clifton House	Key Stage 2	<ul style="list-style-type: none">• Clifton Park Museum
Discover the History of Clifton Park	Key Stage 1 & 2	<ul style="list-style-type: none">• Clifton Park Museum
Exploring Boston Castle and Local Landmarks	Key Stage 1	<ul style="list-style-type: none">• Boston Castle

Booking information

Call 01709 336633 to book your visit.

Before you call check you have the following information

- Date you would like to visit (plus a few alternative dates)
- Year group and number of children
- School contact details including email address, phone number and a contact name

Sessions are for a class of approximately 30 children. For some of the sessions the class may be split in to smaller groups. Groups of less than 27 pupils will be charged a minimum booking fee.

All visits to our venues must be pre booked, even if you are visiting as an unassisted group.

Lunches

Lunch spaces can be booked along with your visit, please ask when booking. Self-guided groups will be charged a fee for booking a lunch space.

Clifton Park and Boston Castle have park areas if you wish to lunch outside.

Session times

Our session times are 10am – 12 noon and 1pm – 3pm. These times can be adapted to meet your needs. Please ask us at the time of booking.

Pre-visit

A confirmation letter along with outline session plan and risk assessments are sent to you before your visit.

Payment

Invoices will be sent to your school after the session. Alternatively you can pay by cheque or cash on the day.

Transport

There is a drop off point outside the entrance to Clifton Park Museum for coaches.

Cancellations

Cancellations and changes to the booking date must be made at least 5 working days before your visit. Cancellations within 24 hours will incur a charge.

Here are some nice things schools have said about our learning experiences

“ Excellent and engaging activities. Children really enjoyed learning about the Romans.”

“ When booking the trip the staff was very helpful and replied to all calls and emails. Thank-you :-).”

“ As class teacher I’ve actually learnt something new, I didn’t know that Roman artefacts were found in Rotherham.”

“ Characters were fantastic!”

“ Amazing experience for our children which will impact on their learning.”

“ Excellent opportunity for all children to learn about their topic in the local area.”

“ Really impressed, lovely staff, very enjoyable. Thank-you.”

“ Thank-you! It was good to give the children the experience of seeing different historical documents and learn about history in their local area.”

“ The workshops were enjoyable, informative and enhanced the children’s learning.”

“ Absolutely, fab from beginning to end.”

“ Thank-you for another excellent workshop.”

“ Excellent organisation and thoroughly engaging activities- exactly what I needed to ignite the new topic.”

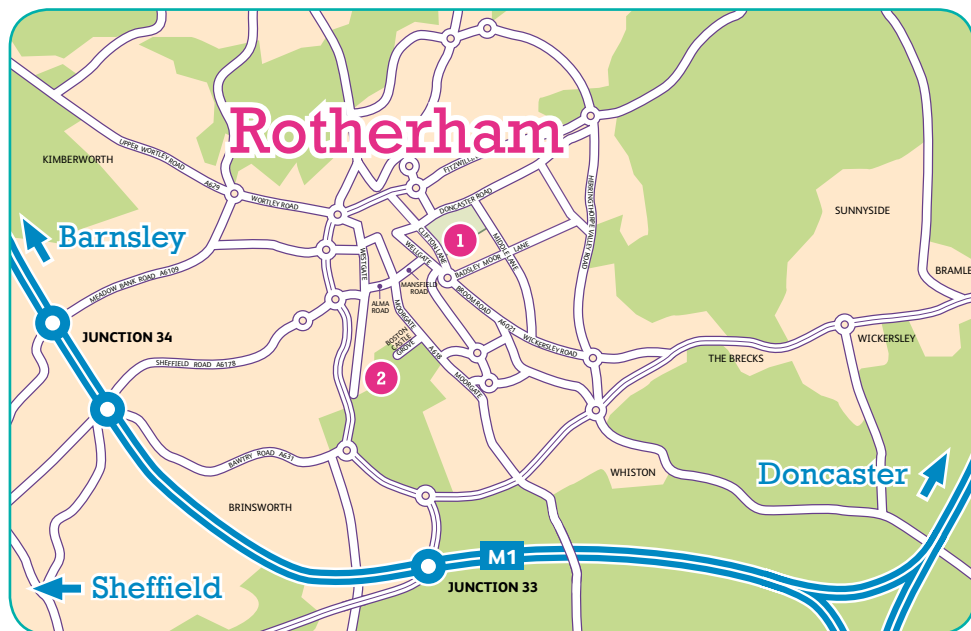
Parking

Clifton Park Museum


There is a drop off point outside the entrance for coaches. For minibuses there is a pay and display car park adjacent to the Museum.

Boston Castle

Coaches and minibuses can park in the car park adjacent to the Castle by prior arrangement. There is no charge for parking.



1 Clifton Park Museum

Clifton Lane
Rotherham
S65 2AA
 Clifton Park Museum

2 Boston Castle

Boston Grove
Moorgate
Rotherham
S60 2BD
 Boston Castle



www.cliftonpark.org.uk



www.rotherhamheritagelearning.org.uk



01709 336633



heritage.learn@rotherham.gov.uk